

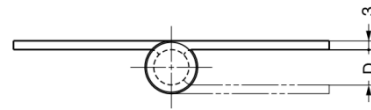
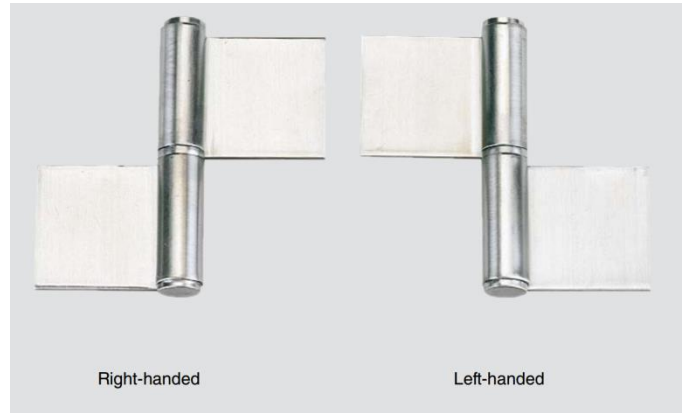
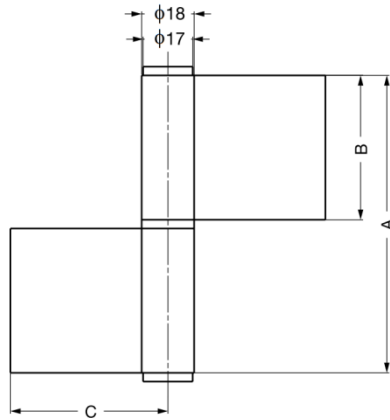
## GS-6166-2 Weld On Stainless Steel Lift-Off Hinge

### Features

- Weld-on type stainless steel lift-off hinge
- Handed: specific left and right hand mounting

### Material

- Stainless steel 304, satin finish



Part No.	Type	A	B	C	D	Load Capacity (per pair)	
GS-6166-2-L	Left-handed	102	49.5	55	12	392 N	40 kg
GS-6166-2-R	Right-handed						

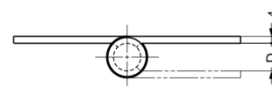
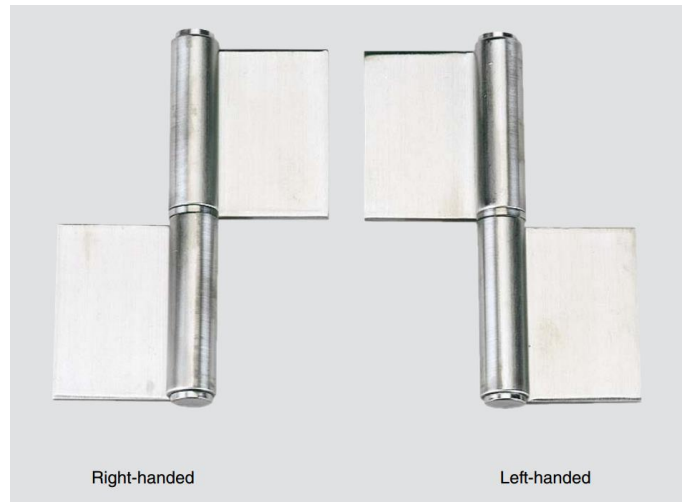
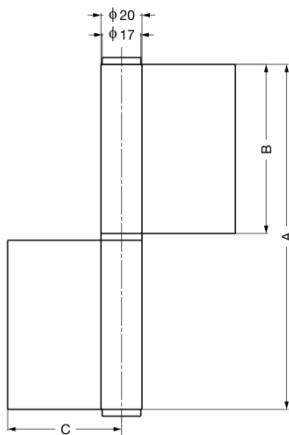
## GS-6166-6 Weld On Stainless Steel Lift-Off Hinge

### Features

- Weld-on type stainless steel lift-off hinge
- Handed: specific left and right hand mounting

### Material

- Stainless steel 304, satin finish



Part No.	Type	A	B	C	D	Load Capacity (per pair)	
GS-6166-6-L	Left-handed	152	74.5	55	12	883 N	90 kg
GS-6166-6-R	Right-handed						